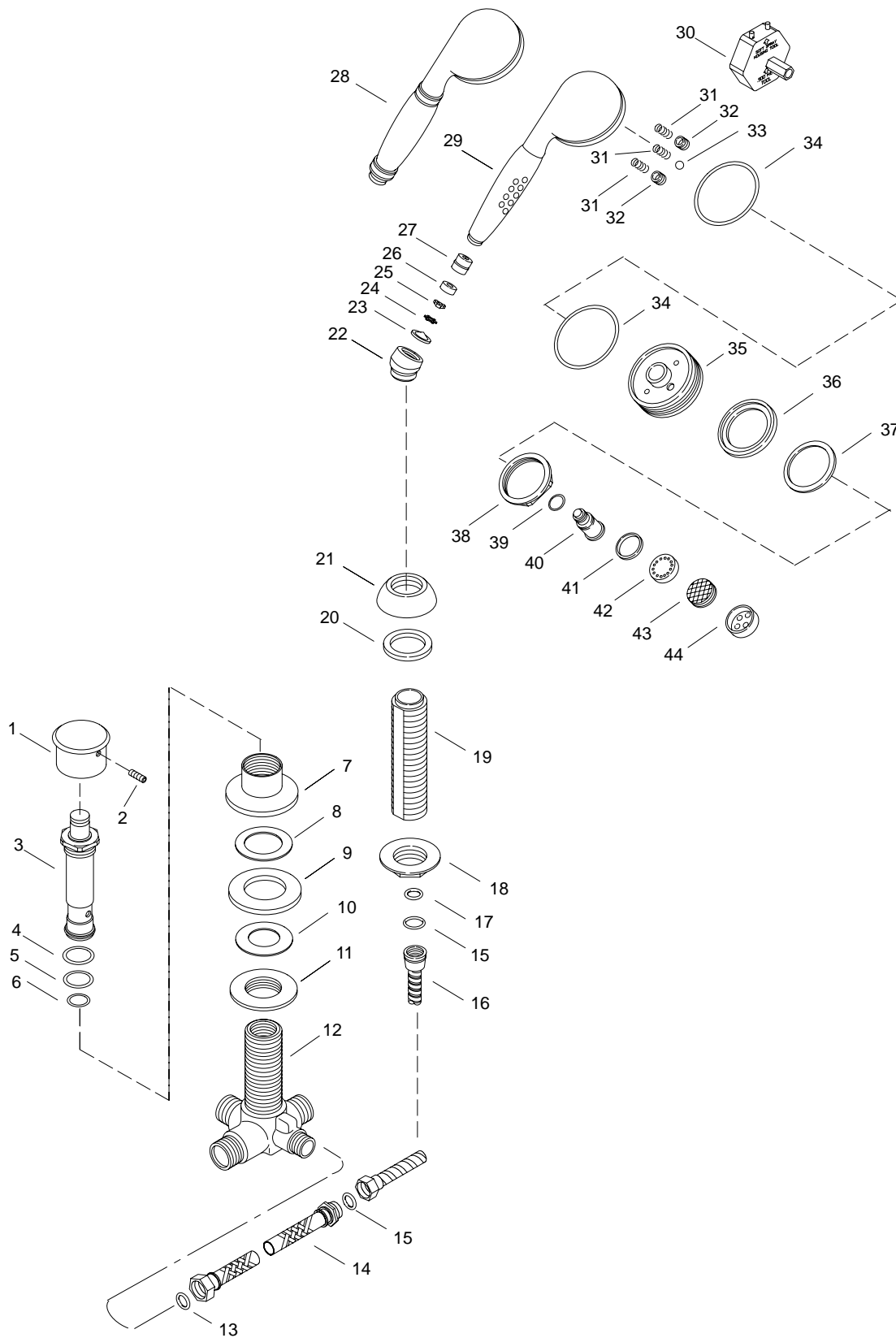


# KOHLER<sup>®</sup> SERVICE PARTS

TWO-WAY DIVERTER  
WITH THREE-WAY HAND SHOWER  
K-6529-\*\*-BA,  
K-16160-\*\*-AA



Variation and/or finish/color code may be required when ordering.

### SERVICE PARTS

ITEM	PART NO.	DESCRIPTION
1	74379	Handle, Diverter
2	74376	Set Screw, Hex-Socket Head
3		Available in Service Kit Only
4	42084	O-Ring
5	60697	O-Ring
6	74169	O-Ring
7	74385	Escutcheon
8	35715	Washer, 1-5/8 ID x 2-3/16 OD
9	56446	Washer, Rubber
10	22352	Washer, Friction
11	58380	Mounting Nut
12	56605	Body, Diverter
13	40295	Washer
14	58959	High Pressure Hose
15	41163	Gasket
16	71158	Hose
17	34353	O-Ring
18	50903	Nut, 1.125-16 UNS-2B
19	58459	Shank
20	39924	Washer, 1-5/16 ID x 1-7/8 OD
21	58458	Escutcheon
22	58457	Elbow Assembly
23	56953	Screen
24	57993	Clip, Retaining
25	57994	Flow Control
26	57992	Housing, Flow Control
27	57098	Insert Assembly
28	73056	Handle Assembly w/Insert (Revival K-16160)
29	73055	Handle Assembly w/Insert (Three-Way K-6529)
30	57453	Tool, Showerhead
31	56937	Spring
32	56933	Seal, Inlet
33	57345	Bearing, Ball
34	56947	Grip Ring
35	56975	Front Housing Assembly
36	56931	Diffuser
37	56949	Washer, Thrust
38	56939	Hex Nut
39	38820	O-Ring
40	56934	Center Post
41	56952	Gasket
42	56948	Aerator Plate
43	73498	Screen Assembly
44	56938	Aerator Housing

### SERVICE KITS

PART NO.	ITEM	QTY.	DESCRIPTION
74392			Diverter Cartridge Assembly
	3	1 ea.	Diverter Cartridge
	4	1 ea.	O-Ring
	5	1 ea.	O-Ring
	6	1 ea.	O-Ring
	59406		
9		1 ea.	Washer, Rubber
10		1 ea.	Washer, Friction
11		1 ea.	Mounting Nut

Variation and/or finish/color code may be required when ordering.