

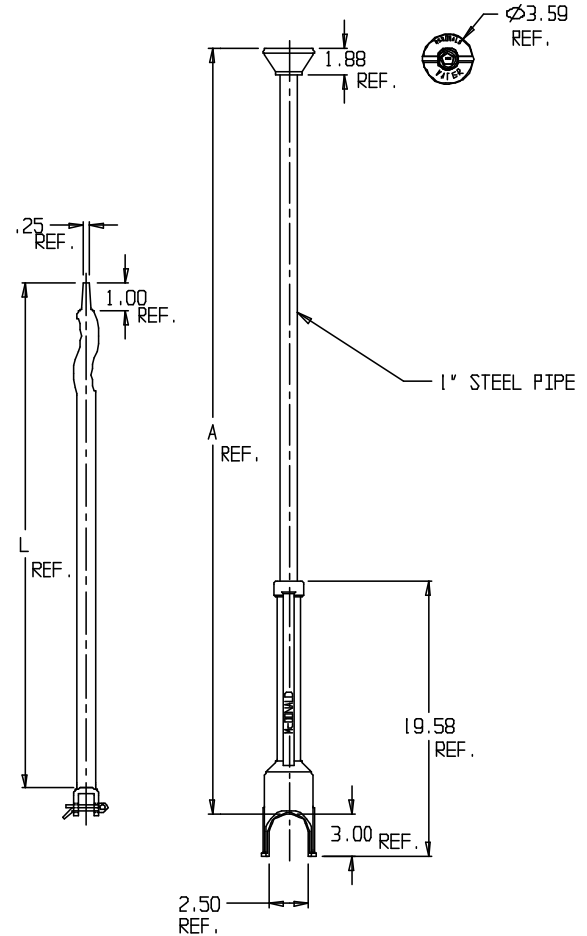
SUBMITTAL DATA SHEET

Curb Boxes – 5607

Arch Pattern



| MODEL NO. | SIZE | A-RANGE | 5660 ROD LENGTH "L" |
|-----------|-------|------------------|---------------------|
| 5607 | 2 1/2 | 1 1/2' TO 2 1/2' | 12" |
| 5607 | 3 | 2' TO 3' | 18" |
| 5607 | 3 1/2 | 2 1/2' TO 3 1/2' | 24" |
| 5607 | 4 | 3' TO 4' | 30" |
| 5607 | 4 1/2 | 3 1/2' TO 4 1/2' | 36" |
| 5607 | 5 | 4' TO 5' | 42" |
| 5607 | 5 1/2 | 4 1/2' TO 5 1/2' | 48" |
| 5607 | 6 | 5' TO 6' | 54" |
| 5607 | 6 1/2 | 5 1/2' TO 6 1/2' | 60" |
| 5607 | 7 | 6' TO 7' | 66" |
| 5607 | 7 1/2 | 6 1/2' TO 7 1/2' | 72" |
| 5607 | 8 | 7' TO 8' | 78" |



SUBMITTAL INFORMATION

- Brass components conform to ASTM B62 and ASTM B584, UNS C83600 -85-5-5-5 (latest revision) or ASTM B584, UNS C84400 -81-3-7-9 (latest revision)
- Lid and Base made of Cast Iron per ASTM A48, Class 25
- Upper Section made of steel pipe
- Coated with black dip



A.Y. McDonald Mfg. Co.
P.O. Box 508
Dubuque, IA 52004-508

Toll Free: 1-800-292-2737
Fax: 1-800-832-9296
Hours: 7:00 a.m. – 5:00 p.m., CST

sales@aymcdonald.com
www.aymcdonald.com

A.Y. McDonald considers the information on this assembly drawing correct when published. Item and option availability, including specifications, are subject to change without notice.

Submitted by: