



EZ Cold Control Relocation Instructions

Cold Control Relocating Instructions

CAUTION: These instructions only apply to Elkay Water Coolers model numbers *EZ*, manufactured after July, 2008, (Serial #'s 0808____, or greater).

Introduction

These instructions are for relocating the Cold Temperature Control, from the original side-rail location to the new top-rail location, as shown.

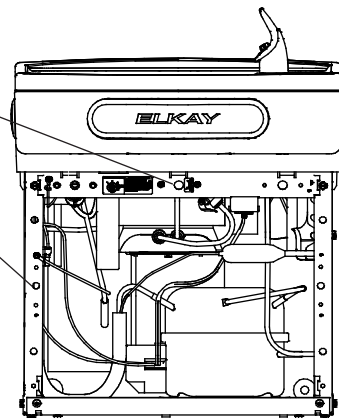
WARNING: DISCONNECT ELECTRICAL POWER TO THE UNIT BEFORE PROCEEDING.

List of items in kit

- Cold Control Mounting Bracket
- Cold Control Cover
- 2 Screws
- Altitude Adjustment Label
- Danger Label
- Colder Label
- 2 Nuts

New Location

Original Location

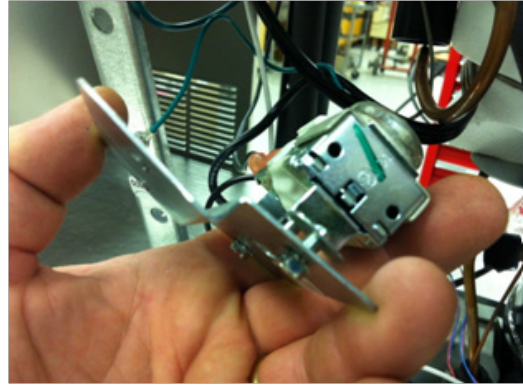


Instruction Steps:

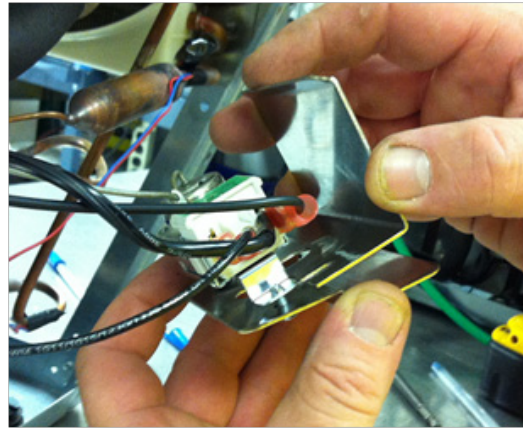
1. Remove the lower front Panel.
2. At the New Location, remove the two stickers found on the top-rail to expose the two holes on the top-rail.
3. At the Original Location, remove the Cold sticker and the two screws holding the Cold Control. Save these screws for later use. DO NOT disconnect any electrical wiring from the Cold Control!



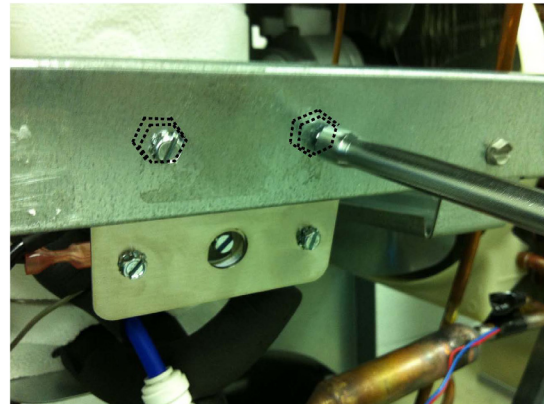
4. Mount the Cold Control onto the supplied Bracket using the two screws removed from the previous step. Do not tighten screws.



5. Slide the provided Cover between the Cold Control and Bracket with the Cover positioned over the Cold Control, as shown. Tighten the two screws.



6. Without disconnecting any wiring, carefully position the Bracket and Cold Control behind the top-rail, as shown. Align the Bracket and top-rail holes and secure with provided two screws and two nuts.



7. Place the three new provided Stickers onto the top-rail and Bracket, as shown.

8. Ensure wiring connections on the Cold Control are firmly in place. Push-in if needed.

9. Adjust the Cold Control to the desired temperature and replace the lower front Panel.

10. Supply power to the unit and test for proper operation. Readjust the Cold Control temperature setting, if necessary.

