

PROJECT: _____	UNIT TAG: _____	QUANTITY: _____
REPRESENTATIVE: _____	TYPE OF SERVICE: _____	DATE: _____
ENGINEER: _____	SUBMITTED BY: _____	DATE: _____
CONTRACTOR: _____	APPROVED BY: _____	DATE: _____
	ORDER NO.: _____	DATE: _____

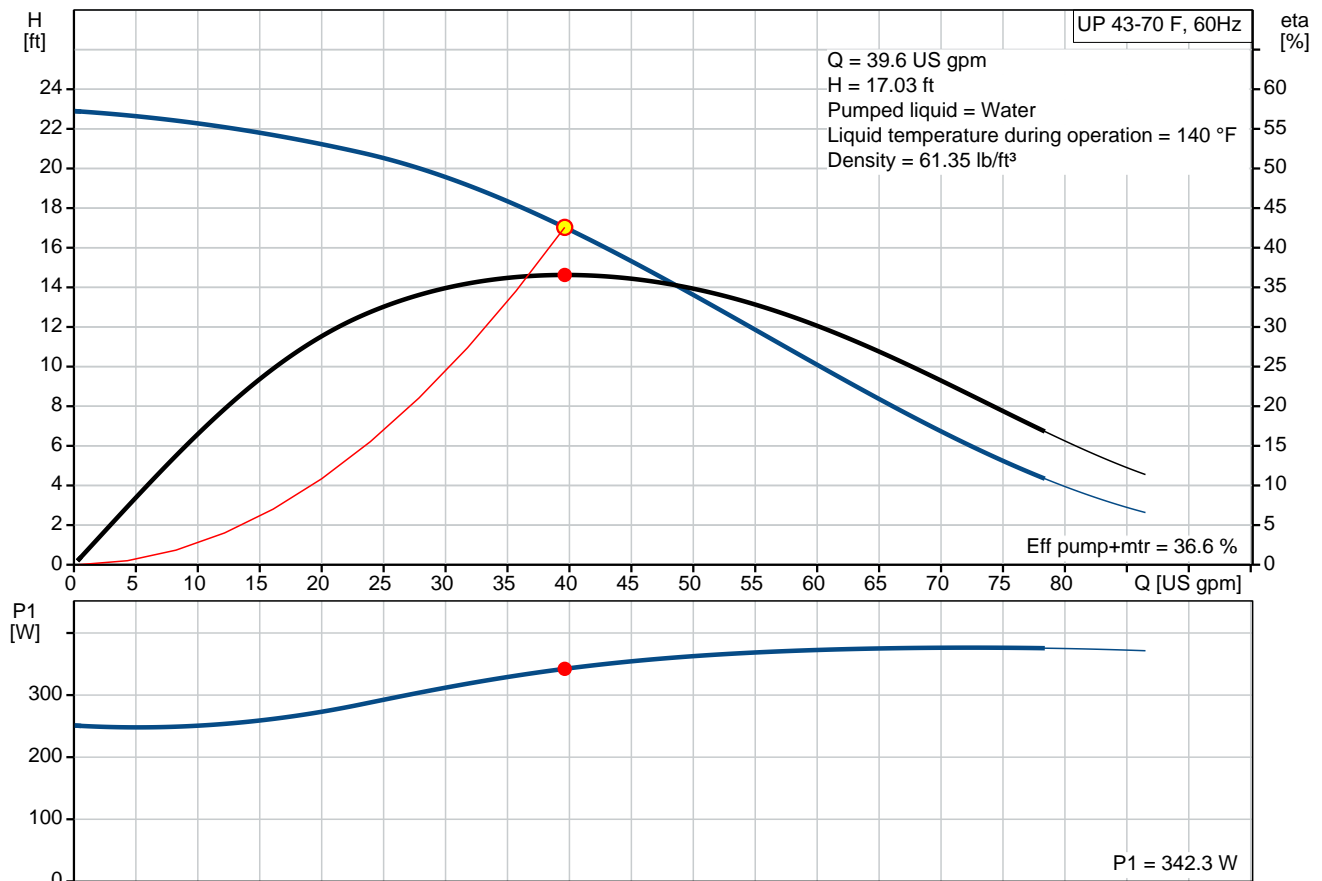


### UP 43-70 F

Circulator pumps

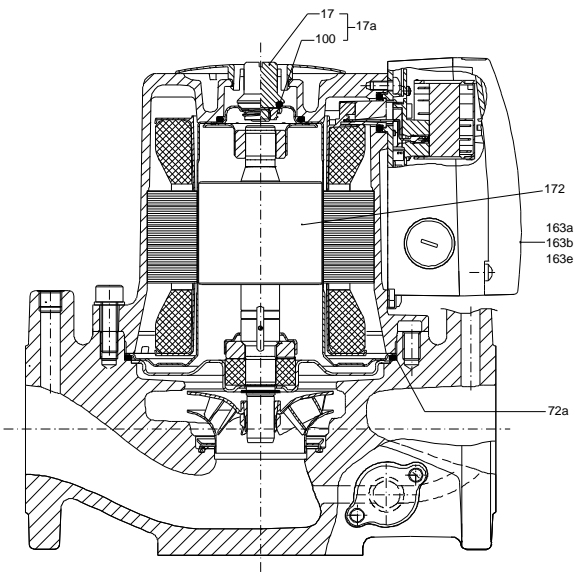
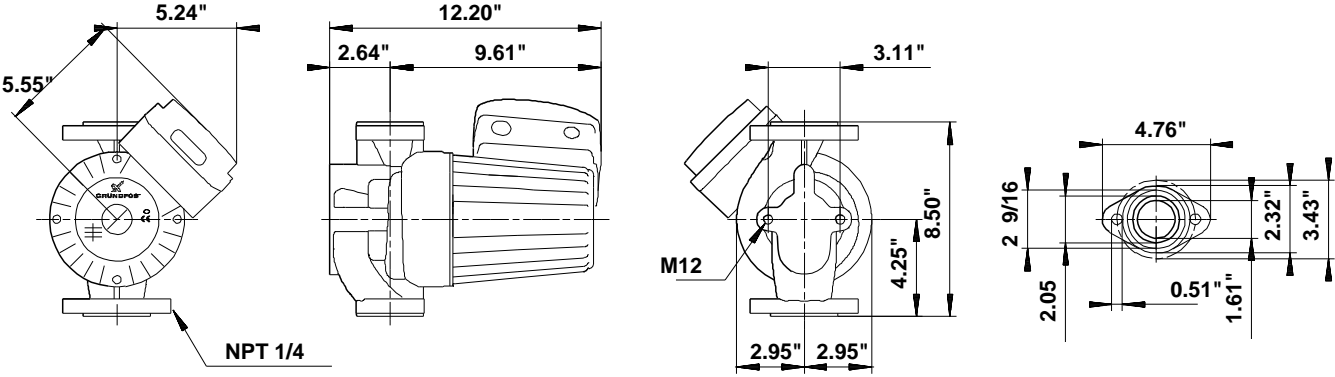
Product photo could vary from the actual product

Conditions of Service		Pump Data		Motor Data	
Flow:	39.6 US gpm	Maximum operating pressure:	124.73 psi	Max. power input:	400 W
Head:	17.03 ft	Liquid temperature range:	14 .. 230 °F	Rated voltage:	115/230 V
Efficiency:	36.6 %	Maximum ambient temperature:	104 °F	Main frequency:	60 Hz
Liquid:	Water	Approvals:	UL,CUL	Enclosure class:	X4D
Temperature:	140 °F	Type of connection:	F	Insulation class:	F
NPSH required:	ft	Flange standard:	USA	Motor protection:	CONTACT
Viscosity:		Pipe connection:	GF 40/43	Thermal protection:	internal
Specific Gravity:	0.985	Product number:	96439644		




3

2



**Materials:**

- Pump housing: Cast iron  
EN-JL1040  
ASTM 35 B - 40 B
- Impeller: Stainless steel  
DIN W.-Nr. 1.4301  
AISI 304

Count	Description
1	<p><b>UP 43-70 F</b></p>  <p>Product photo could vary from the actual product</p> <p>Product No.: <a href="#">96439644</a></p> <p>The pump is of the canned rotor type, i.e. pump and motor form an integral unit without shaft seal and with only two gaskets for sealing. The bearings are lubricated by the pumped liquid.</p> <p>In order to avoid problems in connection with disposal, great importance has been attached to using as few different materials as possible.</p> <p>The pump is characterized by:</p> <ul style="list-style-type: none"> <li>* 1 speed motor.</li> <li>* Ceramic radial bearings.</li> <li>* Carbon axial bearing.</li> <li>* Stainless steel rotor can, bearing plate and rotor cladding.</li> <li>* Aluminium alloy stator housing.</li> <li>* Cast iron pump housing.</li> <li>* Stator with built-in thermal switch.</li> </ul> <p>The motor is a 1-phase motor.</p> <p>The pump is supplied with a standard module in the terminal box. The standard module is to be connected to the mains supply via external contactor.</p> <p><b>Controls:</b></p> <p>Relay: without relay</p> <p><b>Liquid:</b></p> <p>Pumped liquid: Water</p> <p>Liquid temperature range: 14 .. 230 °F</p> <p>Selected liquid temperature: 140 °F</p> <p>Density: 61.35 lb/ft³</p> <p><b>Technical:</b></p> <p>Actual calculated flow: 39.6 US gpm</p> <p>Resulting head of the pump: 17.03 ft</p> <p>Approvals on nameplate: UL, CUL</p> <p><b>Materials:</b></p> <p>Pump housing: Cast iron EN-JL1040 ASTM 35 B - 40 B</p> <p>Impeller: Stainless steel DIN W.-Nr. 1.4301</p>



Company name:

Created by:

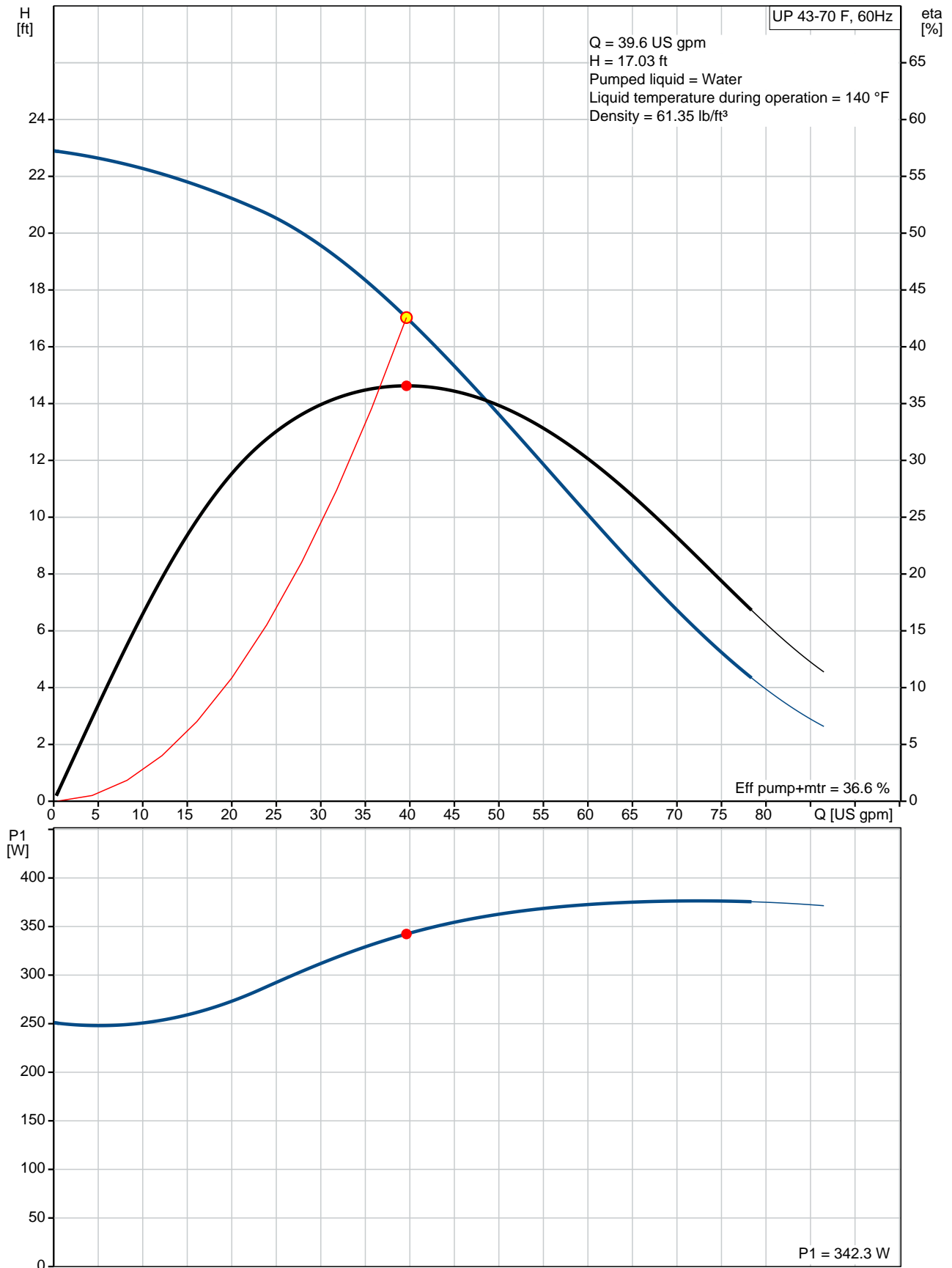
Phone:

Date:

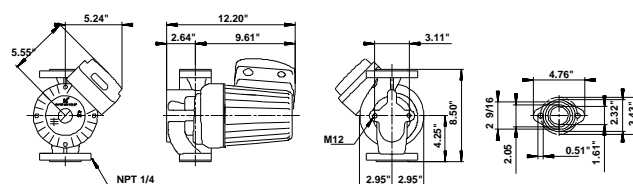
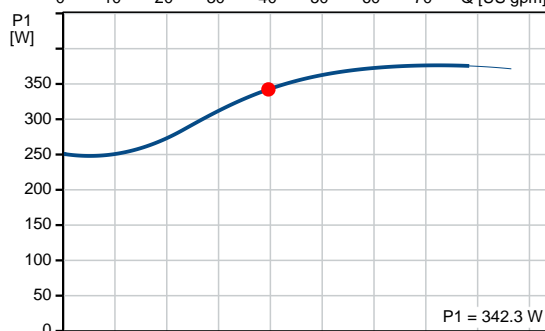
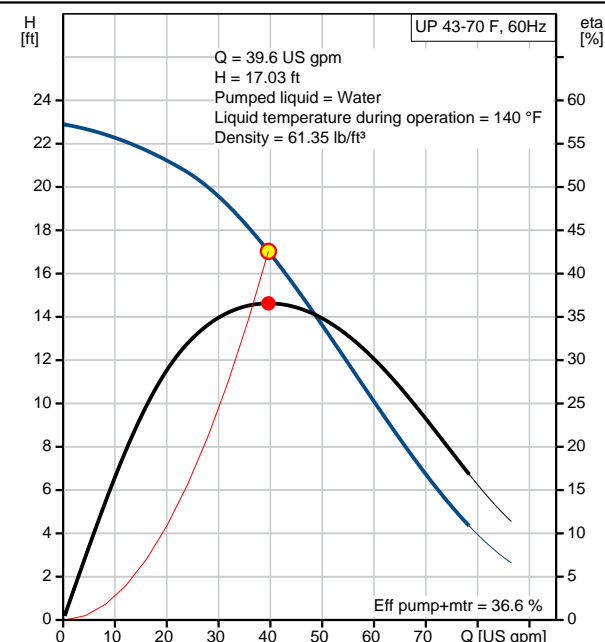
4/11/2019

Count	Description
	AISI 304
	<b>Installation:</b>
	Maximum ambient temperature: 104 °F
	Maximum operating pressure: 124.73 psi
	Flange standard: USA
	Type of connection: F
	Pipe connection: GF 40/43
	Pressure stage: 125 psi
	Port-to-port length: 8 9/16 in
	<b>Electrical data:</b>
	Max. power input: 400 W
	Main frequency: 60 Hz
	Rated voltage: 1 x 115/230 V
	Current in speed 3: 3.4/1.8 A
	Cos phi: 0.95
	Capacitor size - run: 30 µF/400 V
	Enclosure class (IEC 34-5): X4D
	Insulation class (IEC 85): F
	<b>Others:</b>
	Net weight: 33.1 lb
	Gross weight: 40.6 lb
	Shipping volume: 1.02 ft³
	Country of origin: DE
	Custom tariff no.: 8413.70.2005

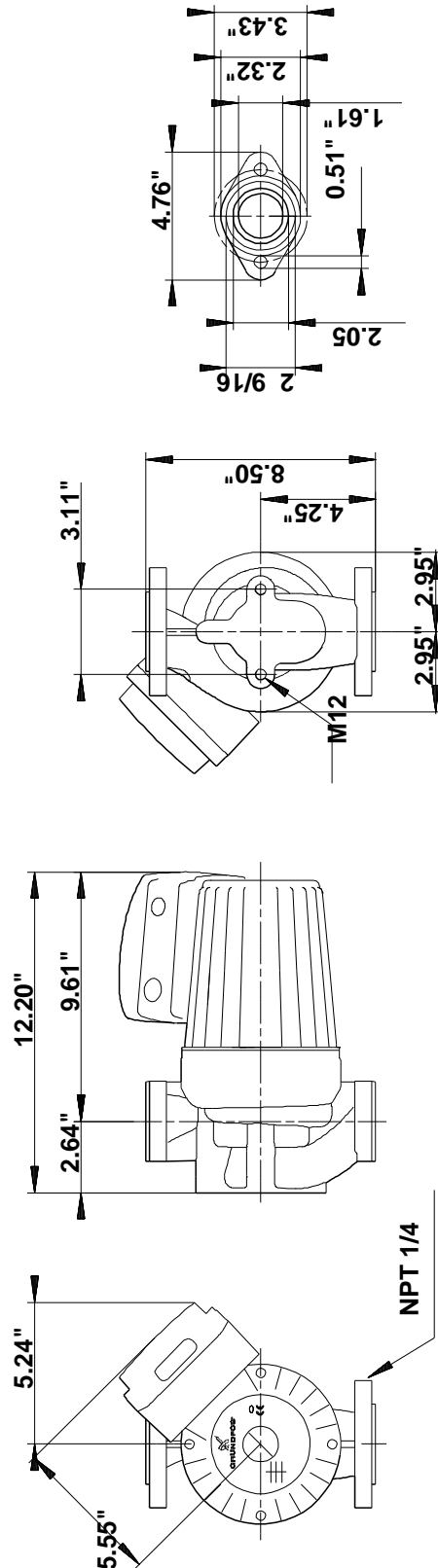
## 96439644 UP 43-70 F 60 Hz



Description	Value
<b>General information:</b>	
Product name:	UP 43-70 F
Product No.:	96439644
EAN:	5700393918573
<b>Technical:</b>	
Speed Number:	1
Actual calculated flow:	39.6 US gpm
Resulting head of the pump:	17.03 ft
Head max:	22.97 ft
Approvals on nameplate:	UL,CUL
Model:	A
<b>Materials:</b>	
Pump housing:	Cast iron
	EN-JL1040
	ASTM 35 B - 40 B
Impeller:	Stainless steel
	DIN W.-Nr. 1.4301
	AISI 304
<b>Installation:</b>	
Maximum ambient temperature:	104 °F
Maximum operating pressure:	124.73 psi
Flange standard:	USA
Type of connection:	F
Pipe connection:	GF 40/43
Pressure stage:	125 psi
Port-to-port length:	8 9/16 in
<b>Liquid:</b>	
Pumped liquid:	Water
Liquid temperature range:	14 .. 230 °F
Selected liquid temperature:	140 °F
Density:	61.35 lb/ft³
<b>Electrical data:</b>	
Max. power input:	400 W
Main frequency:	60 Hz
Rated voltage:	1 x 115/230 V
Current in speed 3:	3.4/1.8 A
Cos phi:	0.95
Capacitor size - run:	30 µF/400 V
Enclosure class (IEC 34-5):	X4D
Insulation class (IEC 85):	F
Motor protection:	CONTACT
Thermal protec:	internal
<b>Controls:</b>	
Relay:	without relay
Pos term box:	1.30H
<b>Others:</b>	
Net weight:	33.1 lb
Gross weight:	40.6 lb
Shipping volume:	1.02 ft³
Sales region:	Namreg
Country of origin:	DE
Custom tariff no.:	8413.70.2005



## 96439644 UP 43-70 F 60 Hz



Note! All units are in [in] unless otherwise stated.  
Disclaimer: This simplified dimensional drawing does not show all details.



Company name:

Created by:

Phone:

Date:

4/11/2019

---

**Order Data:**

Product name: UP 43-70 F

Amount: 1

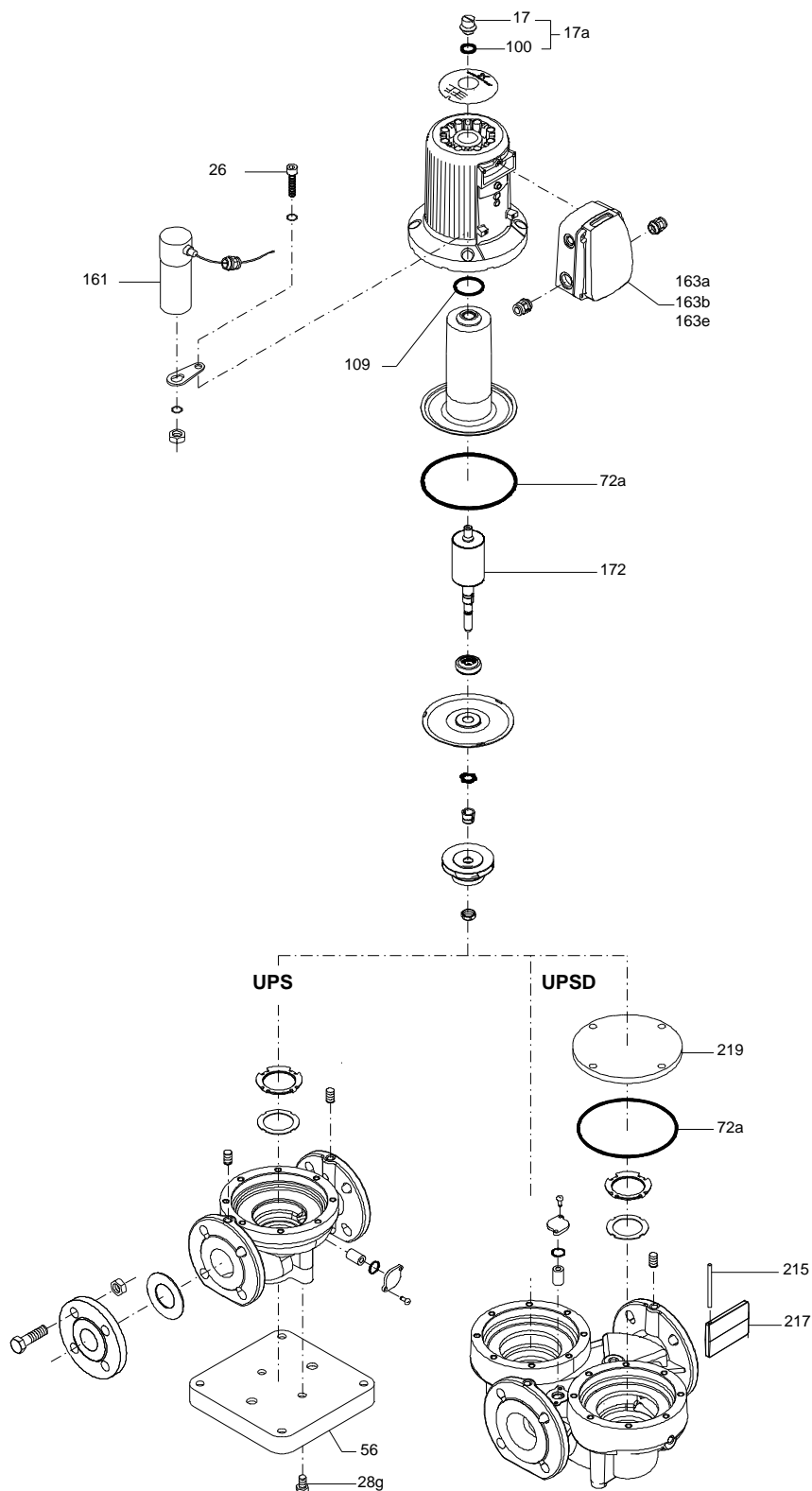
Product No.: 96439644

Total: Price on request

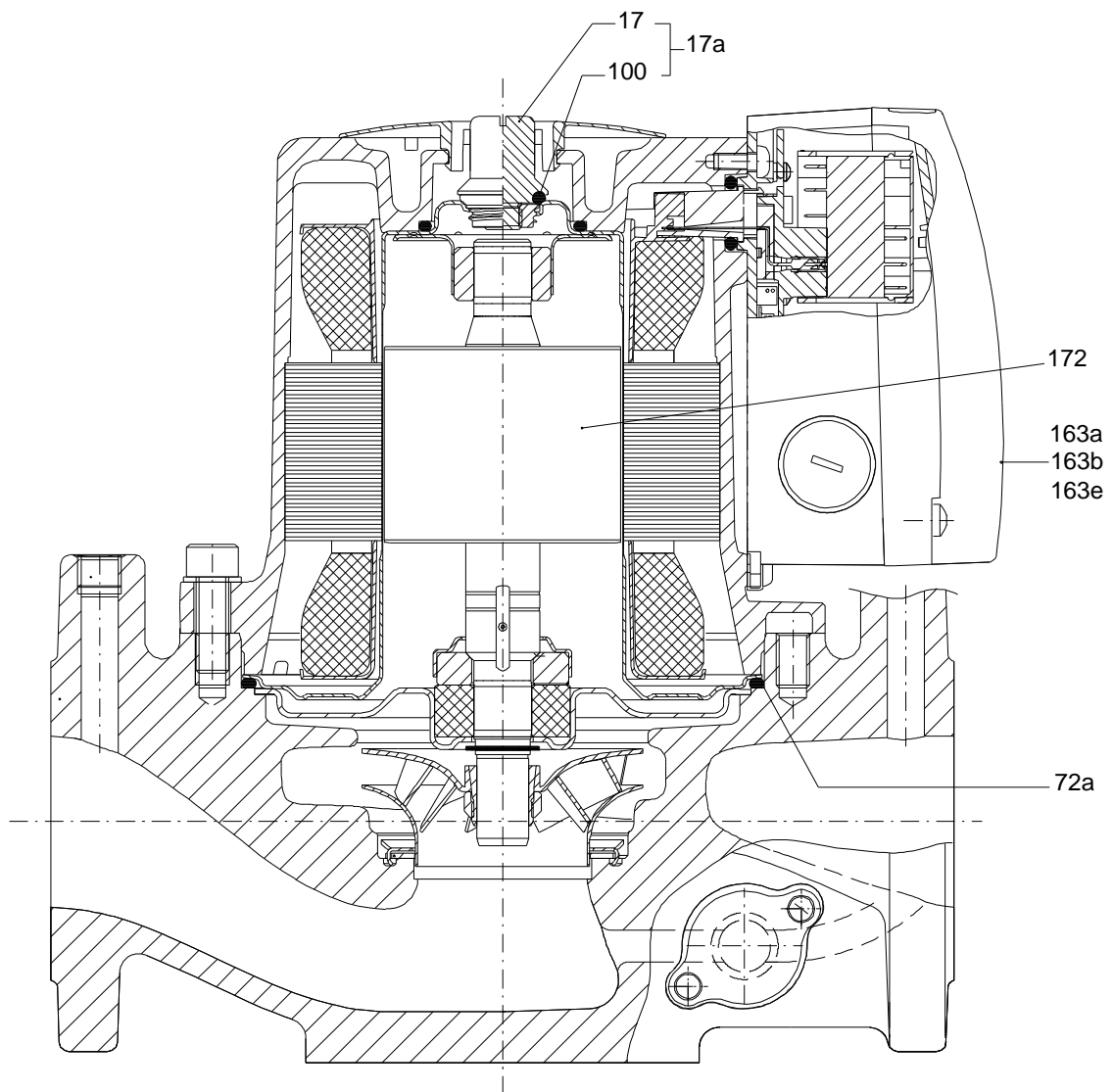
---



(TM010410 3905)



(TM010371 3905)



TM010371



Company name:

Created by:

Phone:

Date:

4/11/2019

**Parts list UP 43-70 F, Prod number 96439644**

**Produced After 9513 (production year and week number)**

Position	Description	Annotation	Classification data	Part No.	Count	Unit
163b	Terminal box cpl.		Designation: 30 UF		1	pcs