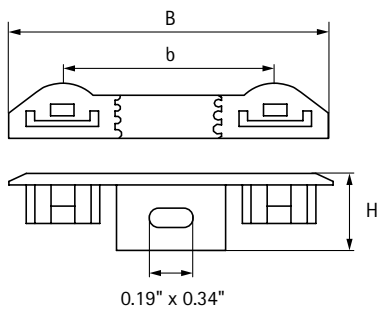


# starQuick® Duo Wall Bracket



### Product Specifications:

- For use with all pipe materials
- Used to easily mount two pipes with starQuick® clamps
- Suitable for starQuick® Clamps up to 3/4" CTS
- Allows for 3/16" lateral adjustment
- The distance between the pipe and the wall is equal to that of a single clip
- Material: modified PA6 (polyamide), grey or white
- Resistant to UV, aging, oil and gasoline
- Corrosion-free, recyclable, halogen free
- Temperature resistance: -40° F to 200° F constant, 270° F peak

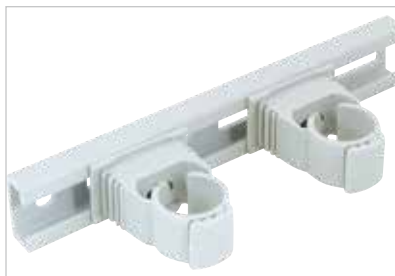
Item Number	B (inches)	b (inches)	H (inches)	Fb,z (lbs)	Items per pkg
0854000	2.95	1.96	0.78	134	100

### Installing two or more pipes

The starQuick® System offers various time and cost-saving solutions for installing two or more parallel pipes. It is possible to tack more than one starQuick® Clamp together. Additional solutions include the starQuick® Fixing Rail and the starQuick® Duo Bracket; the ultimate solution for paired pipe runs such as hot and cold or supply and return runs.



Tacking



Fixing Rail



Duo Bracket

<b>PRODUCT SUBMITTAL</b>		Date:	Architect / Owner:
Job Name:			
		Contractor:	
Part No.	Qty:	Notes:	

THE INFORMATION CONTAINED IN THIS SUBMITTAL SHEET IS PROPRIETARY TO WALRAVEN, INC. AND IS SUBJECT TO CHANGE WITHOUT NOTICE. THIS INFORMATION MAY NOT BE REPRODUCED IN PART OR WHOLE WITHOUT WRITTEN AUTHORIZATION FROM WALRAVEN, INC.



Walraven, Inc.

2605 East Oakley Park Road | Suite B | Walled Lake (Detroit), MI 48390 (US) | Toll free (800) 610.5056 | (248) 374.3100 | Fax (248) 374.3232 | info.us@walraven.com | walraven.com/us