

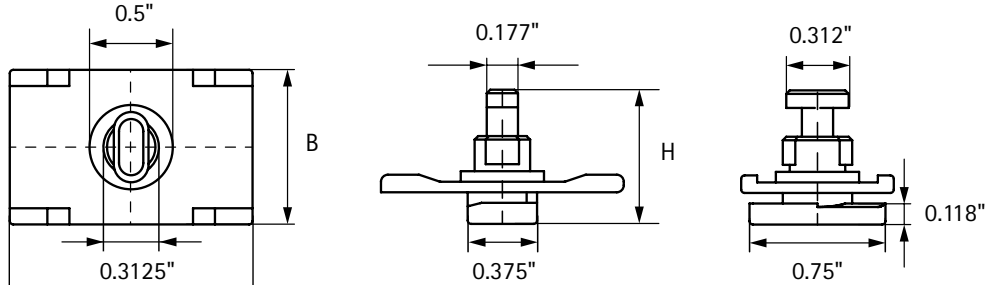
starQuick® Rail Adapter



Product Specifications:

- Used to easily mount starQuick® clamps up to 1-1/4" CTS in size
- Used to attach a starQuick® clamp (without nut) onto a starQuick® Rail
- Material: modified PA6 (polyamide), grey
- Resistant to UV, aging, oil and gasoline
- Corrosion-free, recyclable, halogen free
- Temperature resistance: -40° F to 200° F constant, 270° F peak

Item number	B (inches)	H (inches)	Items per pkg.
0854313	0.866	0.669	100



PRODUCT SUBMITTAL		Date:	Architect / Owner:
Job Name:			
			Contractor:
Part No.	Qty:	Notes:	

THE INFORMATION CONTAINED IN THIS SUBMITTAL SHEET IS PROPRIETARY TO WALRAVEN, INC. AND IS SUBJECT TO CHANGE WITHOUT NOTICE. THIS INFORMATION MAY NOT BE REPRODUCED IN PART OR WHOLE WITHOUT WRITTEN AUTHORIZATION FROM WALRAVEN, INC.

