



Taco 3-Speed Circulators. Do your **best work**®
just your speed.

©Taco Catalog #100-51
Effective Date: 06/05/14
Supersedes: 06/24/13

Three speeds.



One reputation.

The Taco Family of 3-Speed pumps are built to the exacting standards you've come to expect from Taco.

Choose the 0015-IFC 3-Speed Pump for heavy duty reliability and maximum versatility.

Everything that goes into the 0015-IFC 3-Speed — from the powerful, high performance motor to the durable 3-speed switch — says “heavy duty”. With the highest starting torque in its class, this circulator delivers the performance and fine tuning capabilities sure to satisfy the most demanding hydronics system installer. Now available in Stainless Steel for use in domestic potable water systems.

The 0010-IFC 3-Speed Service Pump. A perfect fit.

The 3-Speed Service Pump is specially designed to make short work of service calls. Since it replaces the most commonly used circulators you'll appreciate it the next time you're out on a job at 2 AM. The handy new **universal 4-bolt flange** simplifies change-out of any pump, regardless of style, type, or age. Keep one in the truck — just in case!

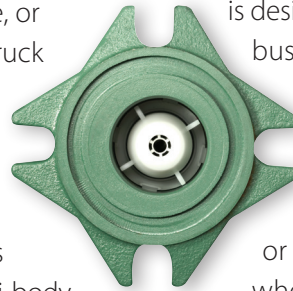
Performance plus convenience.

Both 3-speed circulators feature a removable, uni-body Integral Flow Check (IFC[®]) that maximizes flow, as well as prevents gravity flow, even

in the tallest buildings. Wiring is a snap thanks to an extra roomy capacitor box and convenient dual electrical knock-outs.

Try one on for size.

Whether you need a single speed 00[®], a 3-Speed 0015-IFC Pump for easy fine-tuning or a 3-Speed 0010-IFC for convenience, you can be sure that every Taco circulator is designed to build your business.



Find out more by visiting www.taco-hvac.com

or stopping by your wholesaler for a first-hand look. You'll find we're just your speed.



Low-Lead Compliant

Taco[®]
Do your **best work.**[®]
www.taco-hvac.com

Submittal Data Information 3-Speed Cartridge Circulators

Submittal Data # 101-125
Supersedes: 06/24/13

Effective: 06/05/14

Features

- 3-Speed Switch
- Fine tune to system requirements
- Highest performance & starting torque in class
- Heavy duty construction for longer life
- 4-bolt universal flange (0010 only)
- Removable high-flow Integral Flow Check (IFC)^{*}
 - Prevents gravity flow
 - Reduces installation costs
 - Improves pump performance
- Replaceable cartridge design
- Quiet, efficient operation
- Self lubricating, no mechanical seal
- Wide range of applications
- Cast Iron or Stainless Steel, flanged construction

Materials of Construction

Casing:.....	0015	(Cast Iron or Stainless Steel)
Casing:.....	0010	(Only Cast Iron)
Integral Flow Check (IFC) [*] :		
Body, Plunger	Acetal	
O-ring Seal.....	EPDM	
Spring.....	Stainless Steel	
Stator Housing:.....	Steel	
Cartridge:.....	Stainless Steel	
Impeller:.....	Non-Metallic	
Shaft:.....	Ceramic	
Bearings:.....	Carbon	
O-Ring & Gaskets:.....	EPDM	

Model Nomenclature

F – Cast Iron, Flanged
SF – Stainless Steel, Flanged
MS – 3-Speed Switch
IFC – Integral Flow Check

Performance Data

	0015	0010
Maximum Flow (GPM):	18	31
Maximum Head (FT):	17	11
Minimum Fluid Temperature: 40°F (4°C)		
Maximum Fluid Temperature: 230°F (110°C)		
Maximum Working Pressure: 125 psi		
Connection Sizes: 3/4", 1", 1-1/4", 1-1/2" Flanged		

Certifications & Listings

UL US LISTED FOR INDOOR USE ONLY

NSF Low-Lead Compliant

Certified to NSF/ANSI 372

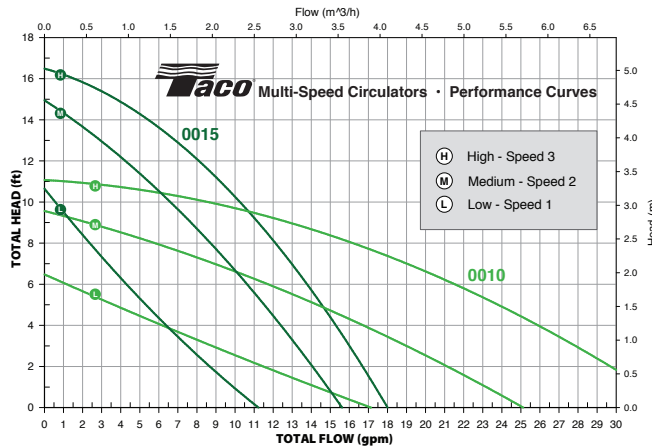
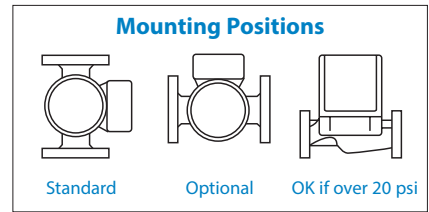
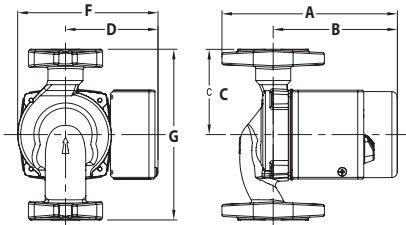
Application

The **0015 3-Speed pump** is specifically designed for the wide range of flow and head requirements of today's hydronic heating systems. Its 3-Speed switching capability provides fine tuning control to match a wide combination of tube diameters and length of runs. The 0015 3-Speed is a direct replacement for the Grundfos UPS 15-58 3-Speed. The 0015 delivers the highest starting torque in its class and includes a removable, uni-body Integral Flow Check (IFC^{*}) that prevents gravity flow, reduces installation costs and improves pump performance. The Stainless Steel 0015 should be used on open, fresh water systems and replaces Grundfos UPS 15-35FC & 15-55FC.

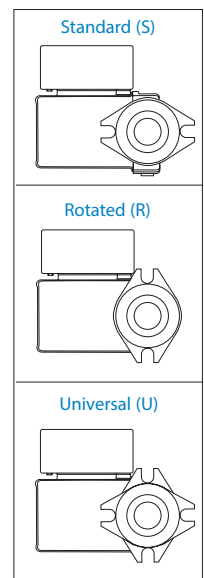
The **0010 3-Speed Service pump** is designed as an ideal replacement circulator for service contractors to use on any emergency "no-heat" call. The 0010 3-Speed replaces most commonly used circulators. Simply install it and set the speed to match the original pump performance. The handy new four bolt flange matches up to any pump regardless of style, type or age.

Pump Dimensions & Weights * Stainless Steel

Models	Flange Code	A		B		C		D		F		G		Ship Wt.	
		in.	mm	in.	mm	in.	mm	in.	mm	in.	mm	in.	mm	lbs.	Kg
0015-MSF3-IFC	S	6-1/2	165	4-5/8	118	3-3/16	81	3-7/16	78	5-3/8	137	6-3/8	162	8	3.5
0015-MSSF3-IFC*	S	6-1/2	165	4-5/8	118	3-3/16	81	3-7/16	78	5-3/8	137	6-3/8	162	8	3.5
0015-MSF3-1 IFC	R	6	152	4-5/8	118	3-3/16	81	3-7/16	78	5-3/8	137	6-3/8	162	8	3.5
0015-MSSF3-1 IFC*	R	6	152	4-5/8	118	3-3/16	81	3-7/16	78	5-3/8	137	6-3/8	162	8	3.5
0010-MSF2-IFC	U	6-11/16	170	4-3/4	120	3-3/16	81	3-7/16	78	5-3/8	137	6-3/8	162	10	4.5



Flange Orientation



Electrical Data

Model	Volts	Hz	Ph	Amps			RPM (Speed 3)	HP
				Speed 1	Speed 2	Speed 3		
0015	115	60	1	.54	.74	.85	3250	1/20
0010	115	60	1	.57	.79	.91	3250	1/20
Motor Type	Permanent Split Capacitor Impedance Protected							



Taco Inc., 1160 Cranston Street, Cranston, RI 02920 / (401) 942-8000 / Fax (401) 942-2360
Taco (Canada) Ltd., 8450 Lawson Road, Unit #3, Milton, Ontario L9T 0J8 / (905) 564-9422 / Fax (905) 564-9436

www.taco-hvac.com