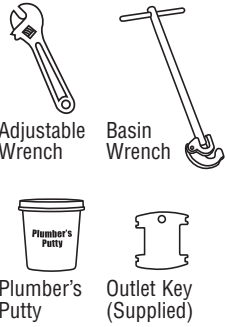


Tools Needed

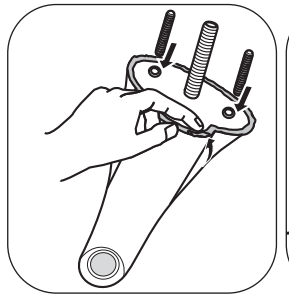


1 Preparation and placement

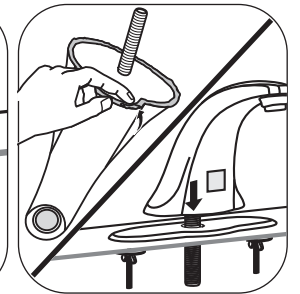
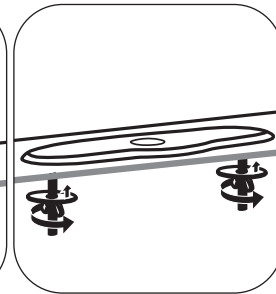
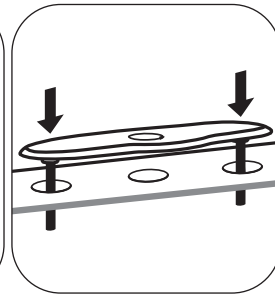
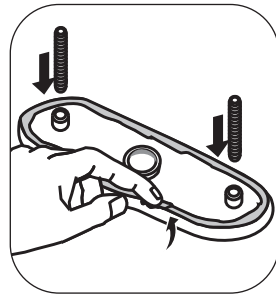
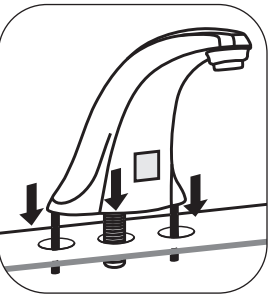
Single Hole



4" Centerset



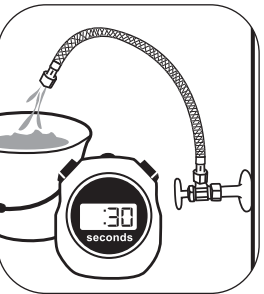
8" Centers with coverplate



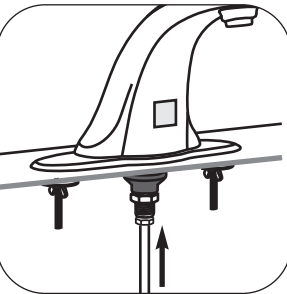
2 Secure faucet



3 Flush supply line

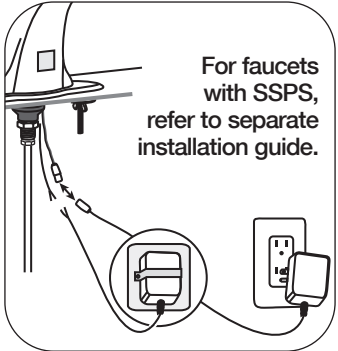


4 Connect supply line

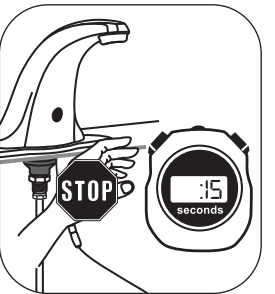
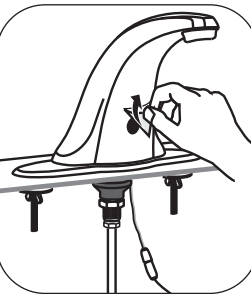


For SSPS units, plumb according to SSPS installation guide.

5 Install outlet



6 Remove lens tape, do not activate



FAUCET WARRANTY - The "Faucet," defined as any metal cast, forged, stamped or formed portion of the Product, not including electronic or moving parts or water restricting components or other components, is warranted against material manufacturing defects for five years from the date of purchase.
FINISH WARRANTY - For Products used in commercial applications, the finish of the Product is warranted against material manufacturing defects for a period of one (1) year from the date of Product purchase.
ELECTRONICS AND SOLENOID WARRANTY - Electronic faucets electronics, SSPS generator, and solenoid are warranted against material manufacturing defects for a period of three (3) years from the date of Product purchase. This warranty does not cover the life of the battery.
 The Company offers NO WARRANTY for Product batteries. Visit www.chicagofaucets.com for complete details.